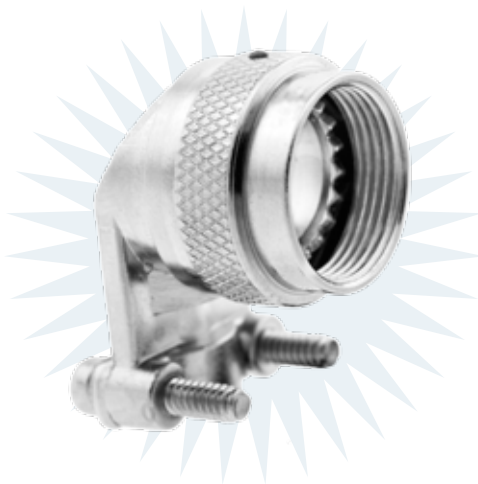


90° Strain Relief Backshell

4LV33/B4



Quick Tip

90° Cable Redirection For Tight Space

Redirect cables to conserve space, and allow for higher panel density. Use self-locking design for high vibration environments. Upgrade to environmental EMI/RFI shielded backshells for outdoor, harsh environment, and mission critical applications.

4LV33/B4 S 25 N

- 1 **BASIC PART NUMBER**
4LV33/B4 90° Strain Relief Backshell
- 2 **SELF-LOCKING**
N Normal
S Self-Locking
- 3 **SHELL SIZE**
See Table 1
- 4 **MATERIAL & FINISH**
A Aluminum, Black Anodize (Non-Self-locking Only)
N Aluminum, Electroless Nickel
W Aluminum, Olive Drab
S Stainless Steel, Passivated (Self-Locking Only)

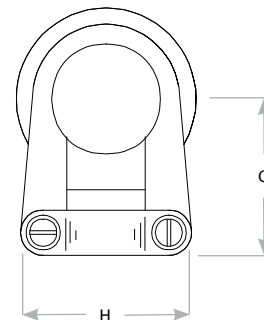
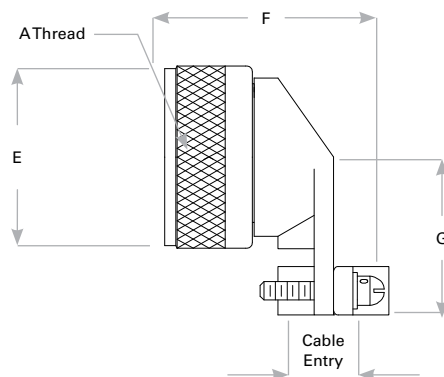
Compatible Series

MIL-DTL-38999 Series III	D38999/20, D38999/23, D38999/24, D38999/26
MIL-DTL-38999 Series IV	D38999/40, D38999/43, D38999/44, D38999/46, D38999/48
Amphenol TV Series	TVP00, TV06, TV07, TVS07
Deutsch DTS Series	DTS20, DTS24, DTS26
ITT Cannon KJA Series	KJA0T, KJA7T, KJA6T

Table 1

Shell Size	Military Shell Size	A Thread Class 2B	E Dia. Max	F Max	G Max	Cable Entry	
						Min	Max
9	A	M12 X 1-6H	.858 (21.8)	1.20 (30.5)	1.00 (25.4)	.098 (2.5)	.234 (5.9)
11	B	M15 X 1-6H	.984 (25.0)	1.20 (30.5)	1.10 (27.9)	.153 (3.9)	.234 (5.9)
13	C	M18 X 1-6H	1.157 (29.4)	1.40 (35.6)	1.10 (27.9)	.190 (4.8)	.328 (8.3)
15	D	M22 X 1-6H	1.279 (32.5)	1.45 (36.8)	1.25 (31.8)	.260 (6.6)	.457 (11.6)
17	E	M25 X 1-6H	1.406 (35.7)	1.60 (40.6)	1.30 (33.0)	.283 (7.2)	.614 (15.6)
19	F	M28 X 1-6H	1.516 (38.5)	1.70 (43.2)	1.35 (34.3)	.325 (8.3)	.634 (16.1)
21	G	M31 X 1-6H	1.642 (41.7)	1.85 (47.0)	1.60 (40.6)	.343 (8.7)	.698 (17.7)
23	H	M34 X 1-6H	1.768 (44.9)	1.95 (49.5)	1.75 (44.5)	.381 (9.7)	.823 (20.9)
25	J	M37 X 1-6H	1.889 (48.0)	2.10 (53.3)	1.85 (47.0)	.418 (10.6)	.853 (21.7)

Dimensions are in inches, (mm)



Note: Screw orientation shown is for non-self-locking configuration. Screws on self-locking configurations are on the same side/face of the clamp.